

ST. AUGUSTINE

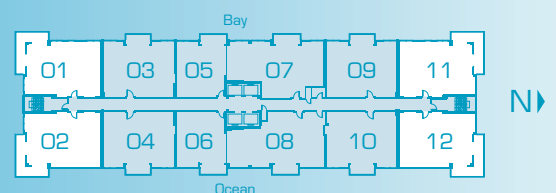
2 bedroom / 2 bath

- interior 1258 square feet
- terrace 198 square feet
- total 1456 square feet



THE FLORIDIAN

condominium
south beach

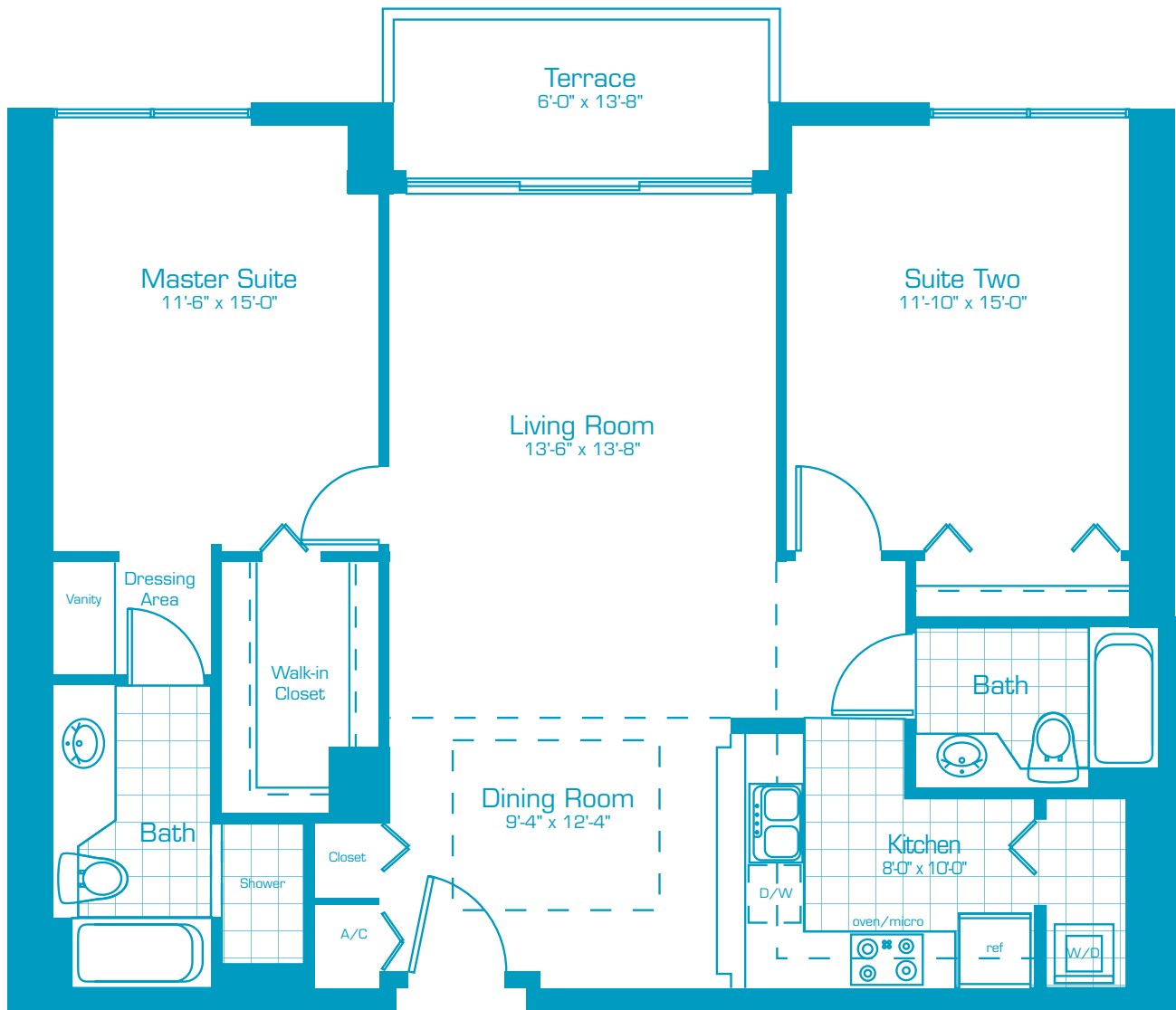


The Floridian LLC's policy of continual attention to design and construction requires that all specifications, equipment, landscape plans, dimensions and prices are subject to change without notice

SARASOTA

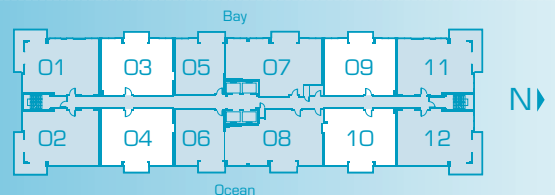
2 bedroom / 2 bath

- interior 1225 square feet
- terrace 75 square feet
- total 1300 square feet



THE FLORIDIAN

condominium
south beach

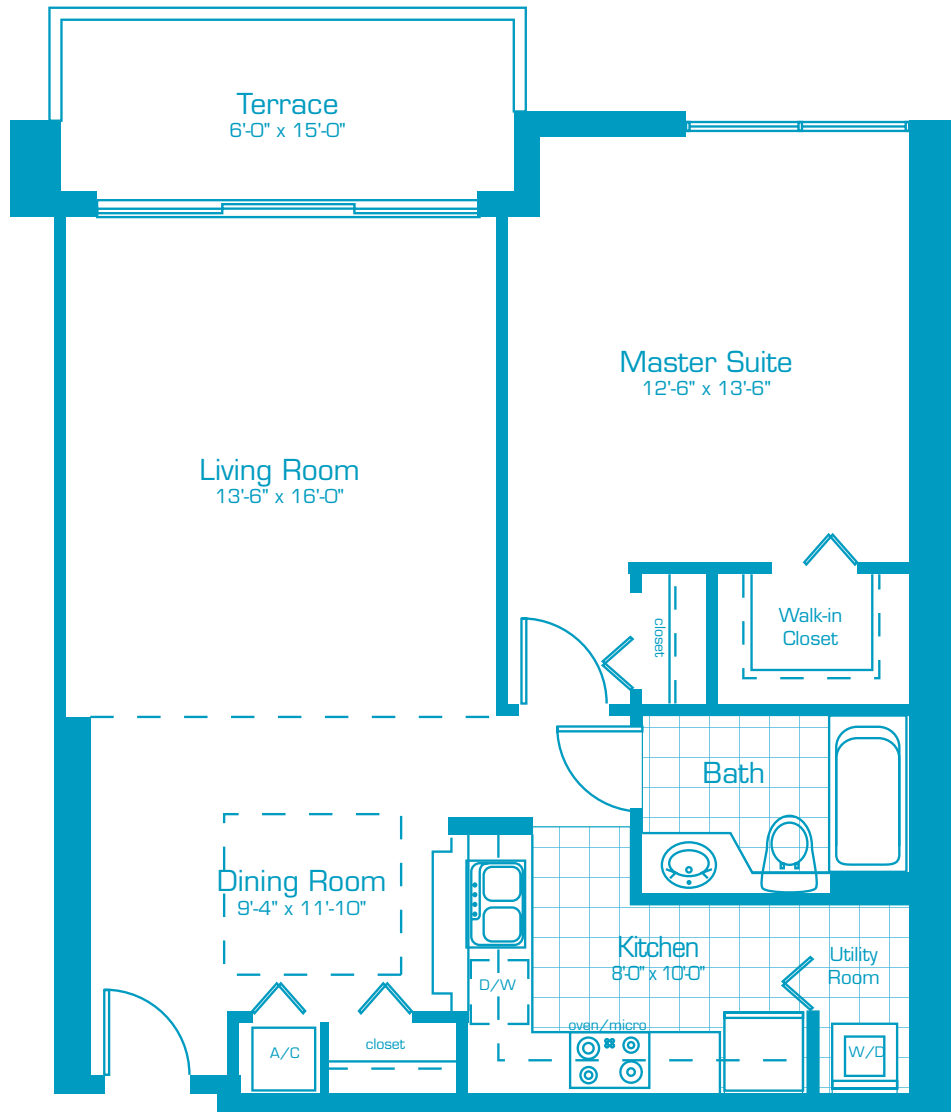


The Floridian LLC's policy of continual attention to design and construction requires that all specifications, equipment, landscape plans, dimensions and prices are subject to change without notice

KEY WEST

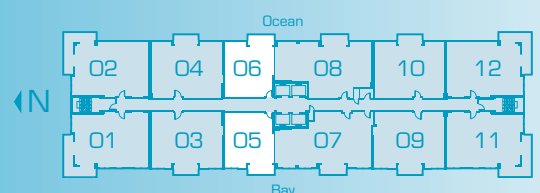
1 bedroom / 1 bath

- interior840 square feet
- terrace75 square feet
- total915 square feet



THE FLORIDIAN

condominium
south beach

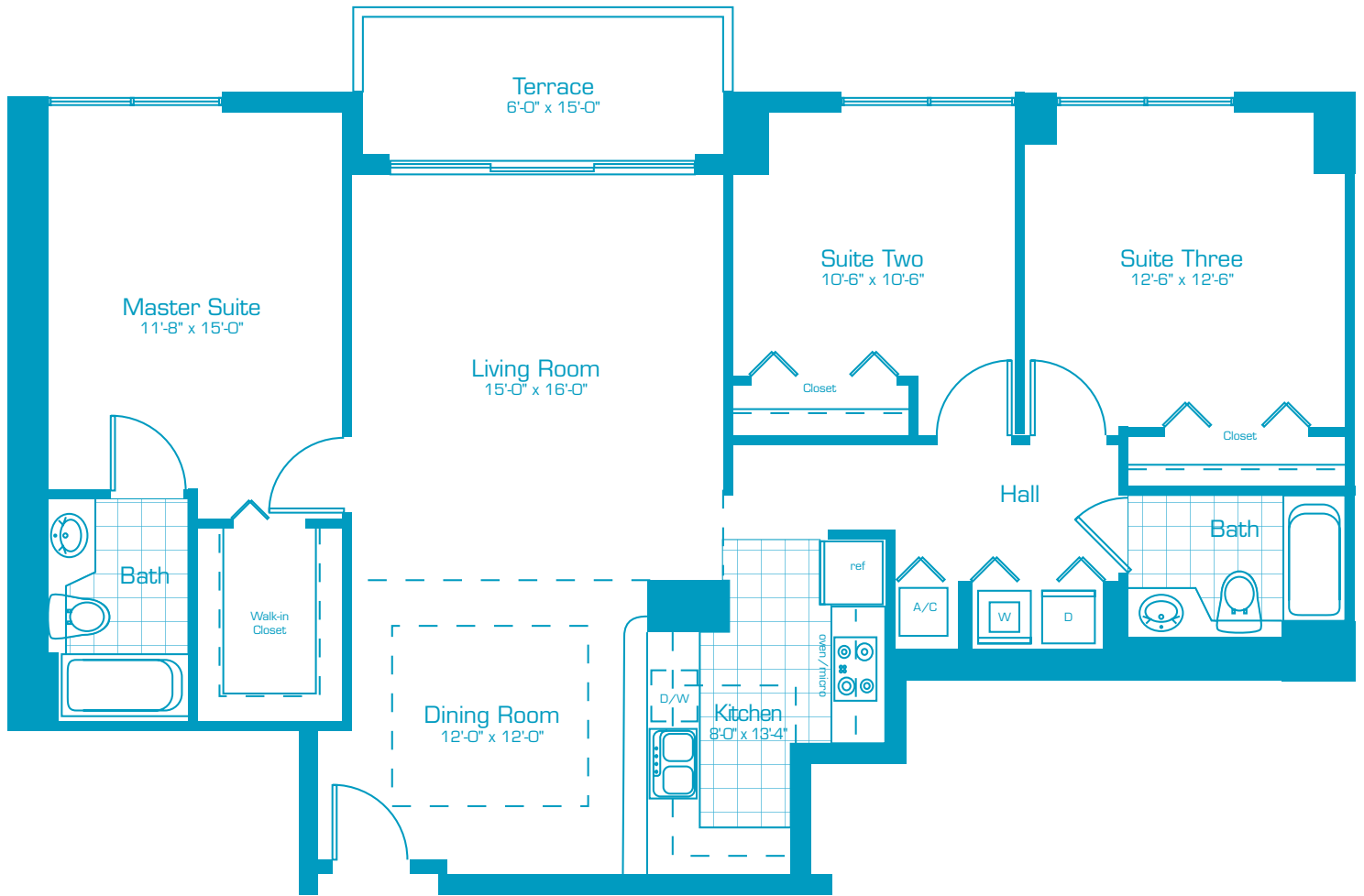


The Floridian LLC's policy of continual attention to design and construction requires that all specifications, equipment, landscape plans, dimensions and prices are subject to change without notice

MELBOURNE

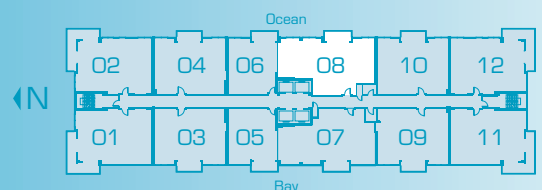
3 bedroom / 2 bath

- interior 1324 square feet
- terrace 75 square feet
- total 1399 square feet



THE FLORIDIAN

condominium
south beach

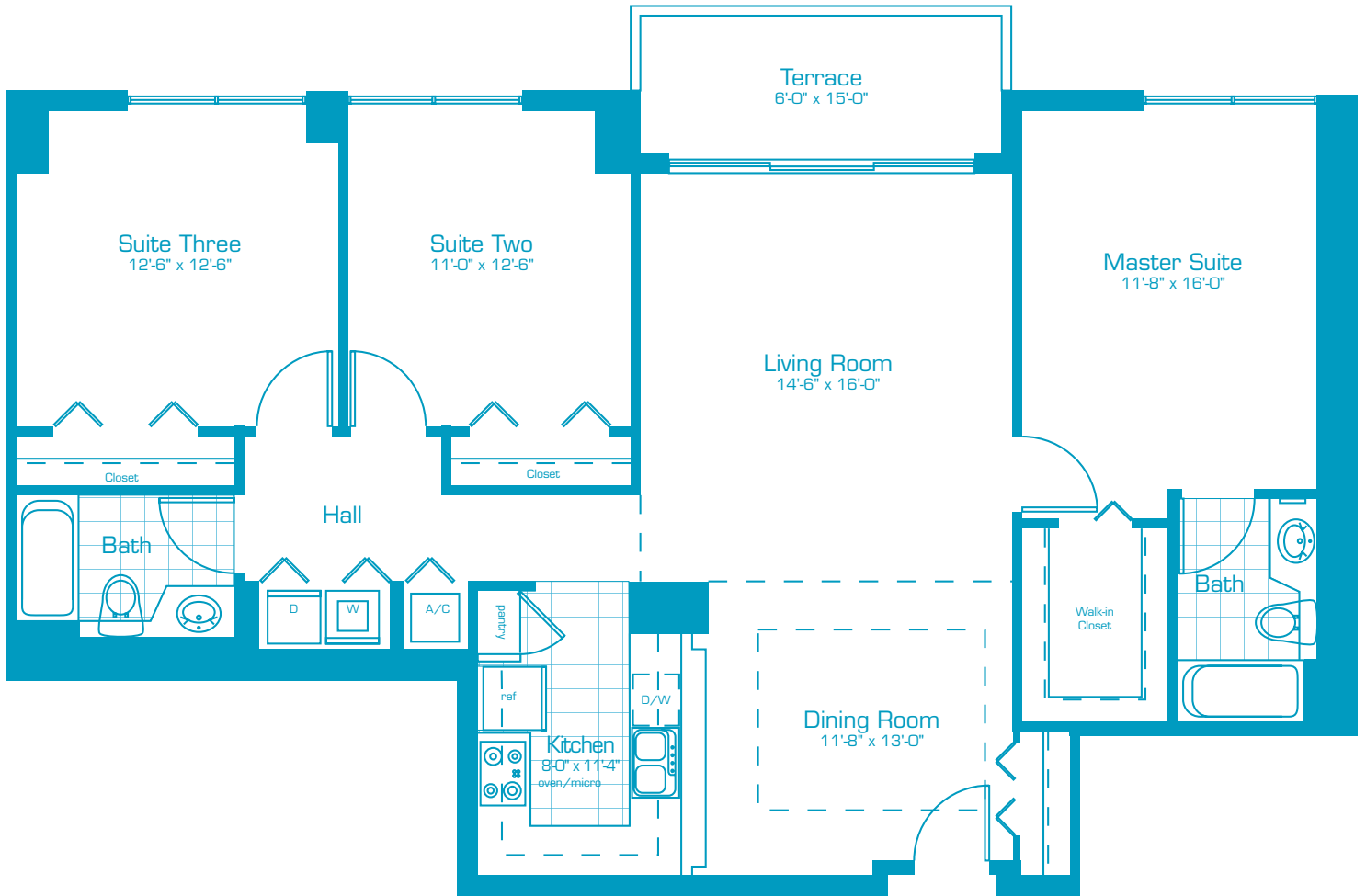


The Floridian LLC's policy of continual attention to design and construction requires that all specifications, equipment, landscape plans, dimensions and prices are subject to change without notice

SANIBEL

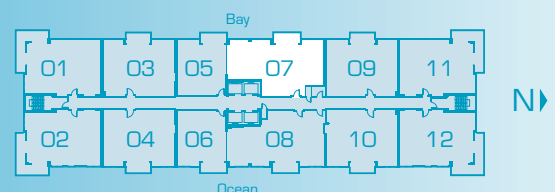
3 bedroom / 2 bath

- interior 1372 square feet
- terrace 75 square feet
- total 1447 square feet



THE FLORIDIAN

condominium
south beach



The Floridian LLC's policy of continual attention to design and construction requires that all specifications, equipment, landscape plans, dimensions and prices are subject to change without notice